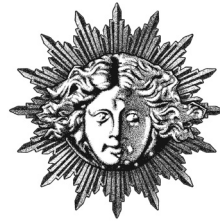


J.CHRISTOPHER



Terroir-focused wines from the Willamette Valley



Appassionata Estate

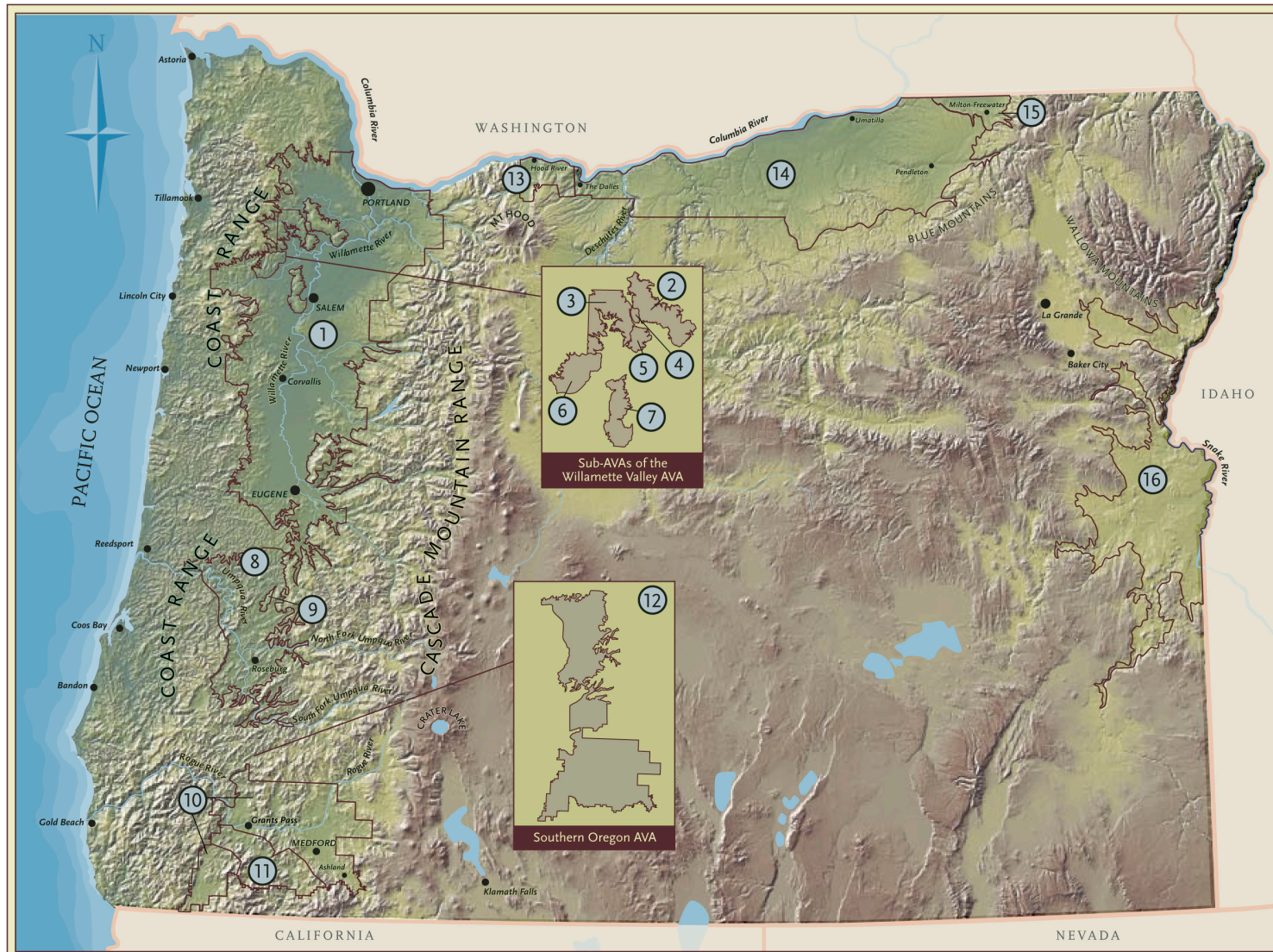
– Home of J. Christopher Wines –



Winemaker Tim Malone

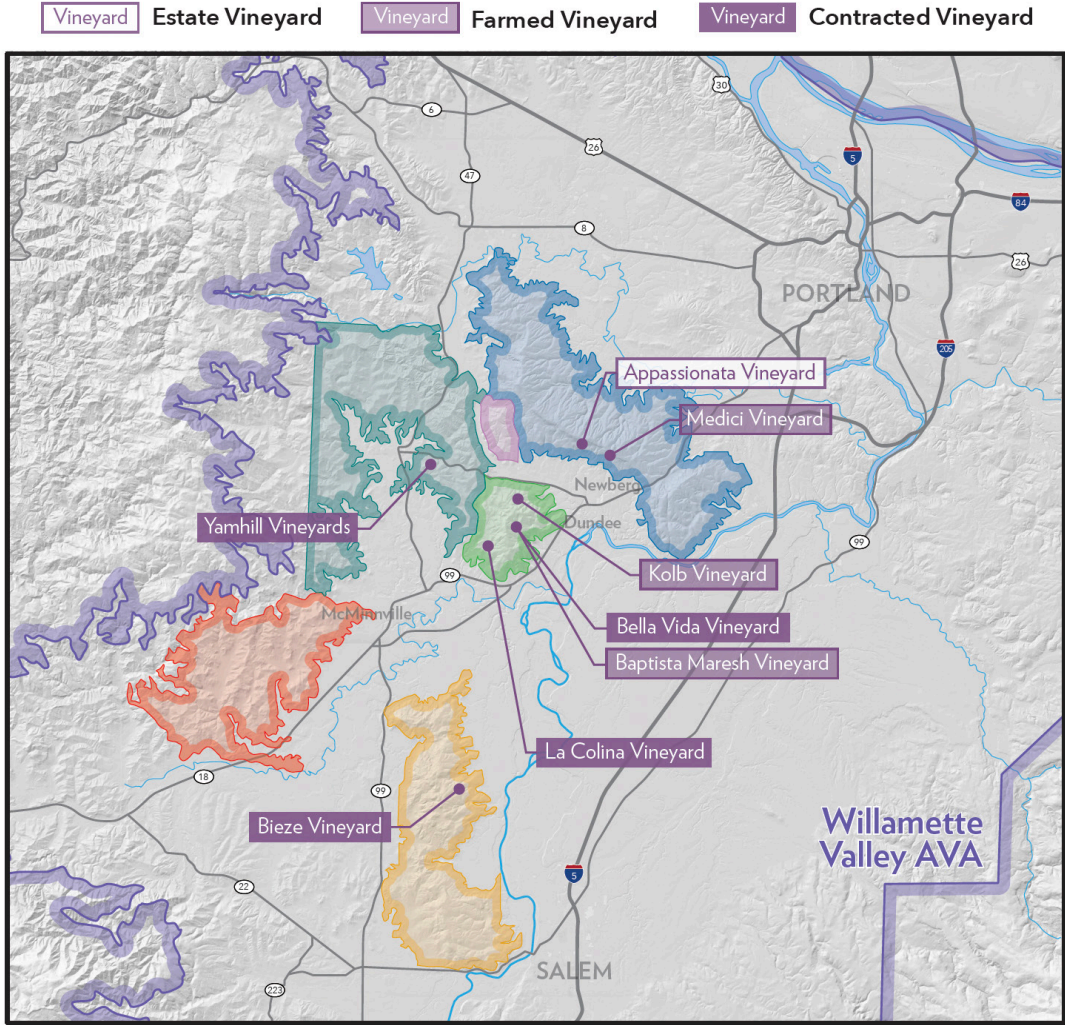


The Wine Regions of Oregon



AMERICAN VITICULTURAL AREAS OF OREGON			
1	Willamette Valley	5	Dundee Hills
2	Chehalem Mountains	6	McMinnville
3	Yamhill-Carlton District	7	Eola-Amity Hills
4	Ribbon Ridge	8	Umpqua Valley
9	Red Hills Douglas County	10	Rogue Valley
11	Applegate Valley	12	Southern Oregon
13	Columbia Gorge	14	Columbia Valley
15	Walla Walla Valley	16	Snake River Valley

Vineyard Sources

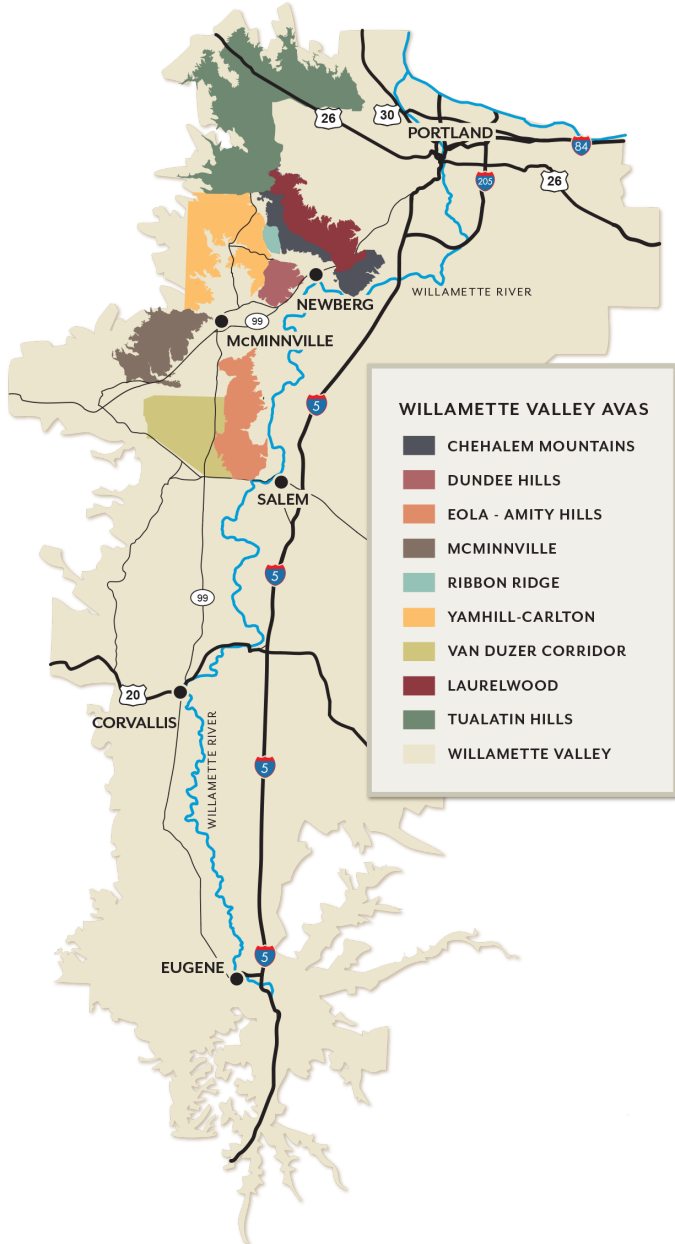


American Viticultural Areas of the Northern Willamette Valley

- Chehalem Mountains AVA
- Dundee Hills AVA
- McMinnville AVA
- Yamhill-Carlton AVA
- Ribbon Ridge AVA
- Eola-Amity Hills AVA



The Willamette Valley AVA



The Willamette Valley is Oregon's oldest wine region, has two-thirds of the state's wineries and vineyards and is home to more than 700 wineries. Framed by the Coast Range to the west and Cascades to the east, the Willamette Valley is recognized as one of the premier winegrowing regions in the world.

- Established in 1984; first grapes cultivated in Oregon as early as 1847, but the industry we know today got its start in the 1960s.
- Comprised of 5,200 square miles, encompassing the entire drainage basin of the Willamette River.
- First planting of Pinot Noir in the Willamette Valley took place in 1965.
- In addition to the flagship Pinot Noir, Oregon also produces Pinot Gris, Pinot Blanc, Chardonnay, Riesling, Gewürztraminer, Sauvignon Blanc, Syrah, Gamay, and other lesser-known varieties.
- The overall climate is mild and characterized by cool and wet winters and dry and warm summers.
- Most rainfall occurs in the late autumn, winter, and early spring, when temperatures are the coldest.
- This temperate climate, combined with coastal marine influences, makes growing conditions ideal for cool-climate grapes, especially Pinot Noir.

Our Home in the Chehalem Mountains

View of Appassionata Estate



Diverse Soil Types



Appassionata Vineyard

The Chehalem Mountains AVA



Volcanic clay soil

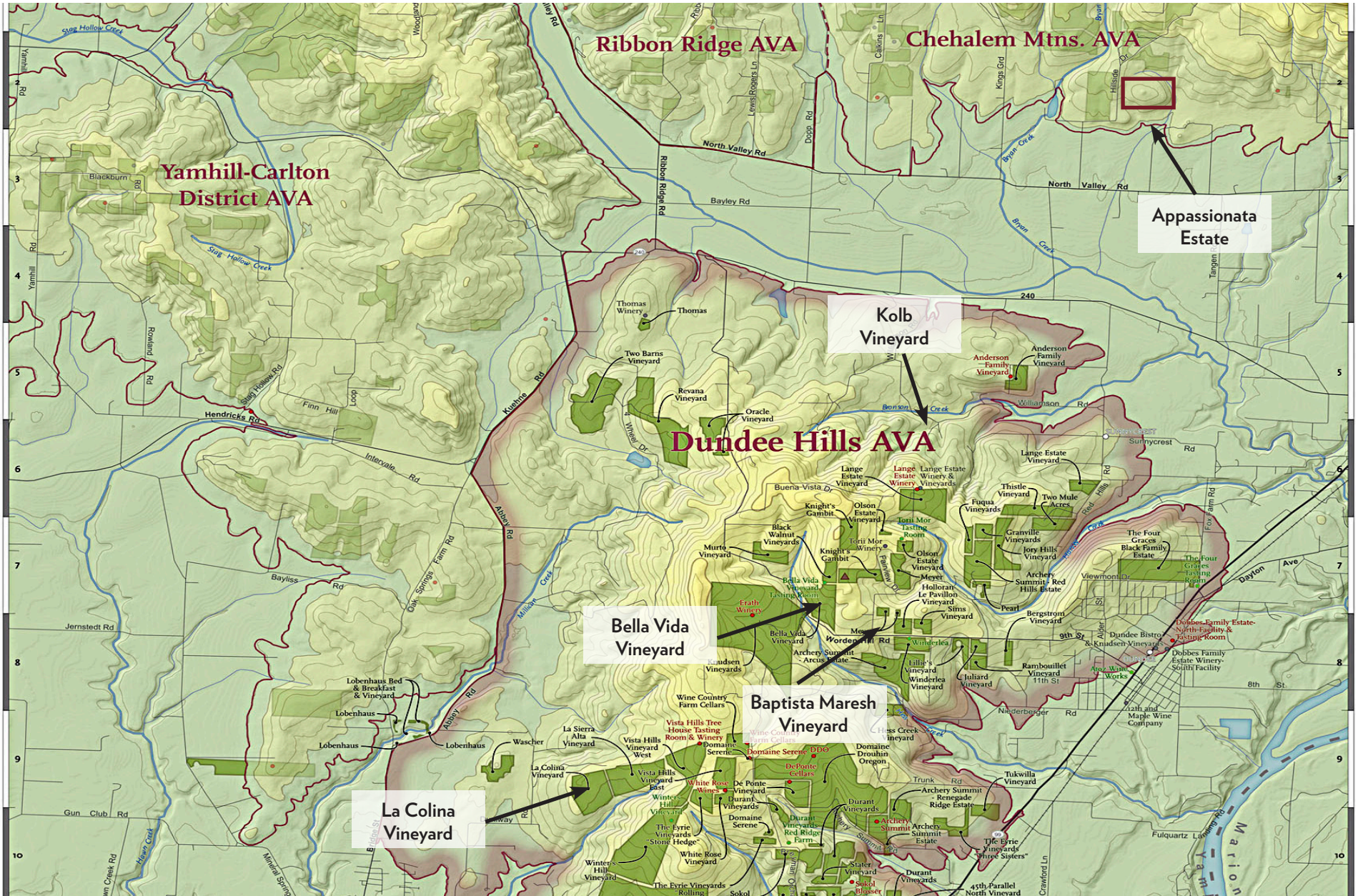


The Medici Vineyard

With a rich diversity of elevations, soils and aspects, this region offers wines of great complexity and intrigue. The cool climate and endless combinations of soils and elevations produce wines with defined structure, offering notes of strawberries and cherries in cooler vintages and darker fruit in riper years.

- Established in 2006.
- Consists of almost 70,000 acres, over 1,600 acres planted to wine grapes.
- Highest point of the Willamette Valley is Bald Peak in the Chehalem Mountains, at 1,633 feet.
- Rich, and diverse soil types encompassing everything from sedimentary sea beds to red volcanic soils to glacial sediment.
 - **We have counted 11 different soil types in the Appassionata Vineyard.**
- The climate here is generally mild, with cool, wet winters and warm, dry summers. Temperatures and rainfall can vary widely throughout this region.

The Dundee Hills AVA



The Dundee Hills AVA



View of Mt. Hood from the Baptista Maresh Vineyard



Kolb Vineyard

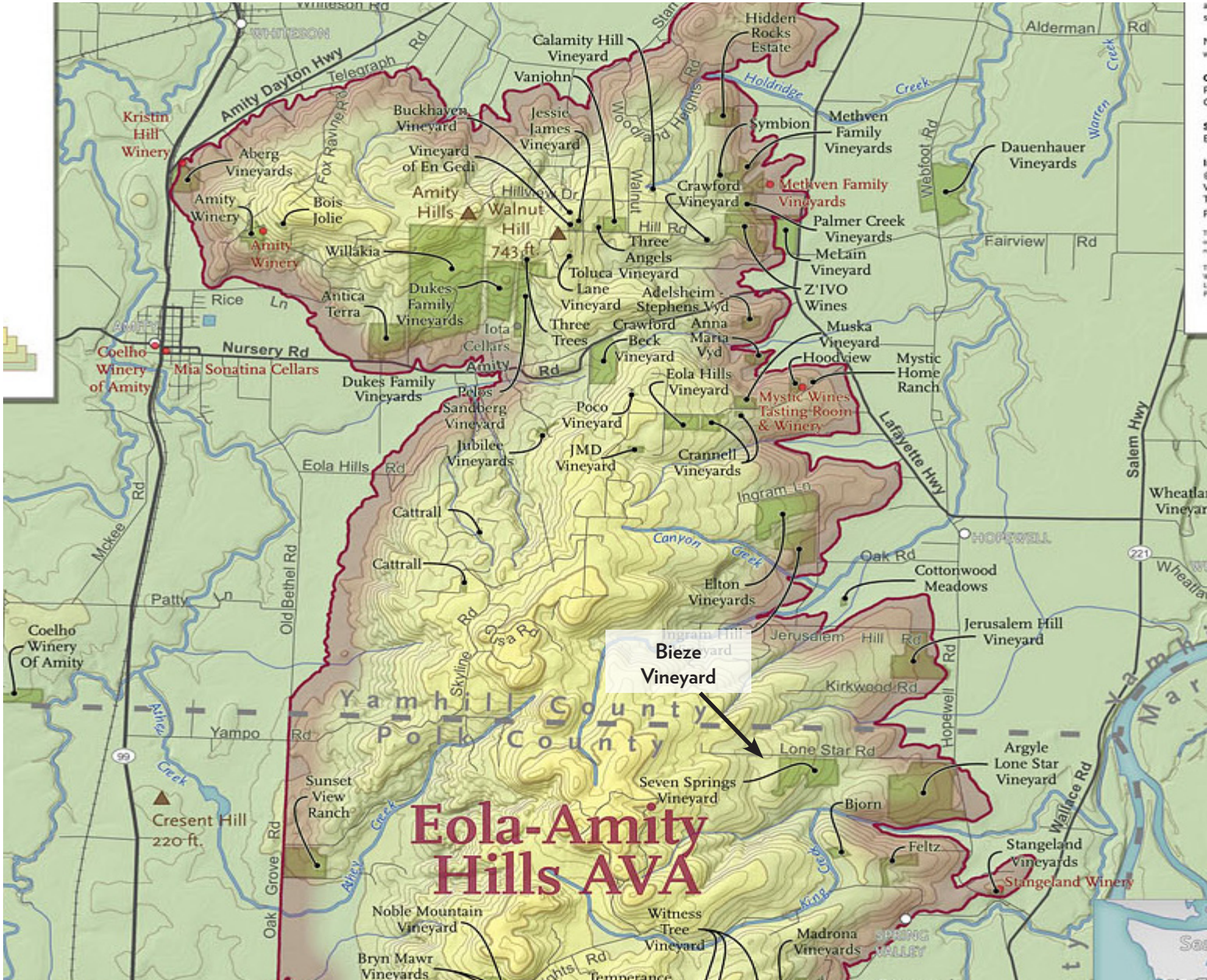
Known as the epicenter of Oregon Pinot Noir, the first vines were planted in Dundee Hills AVA more than fifty years ago. These rolling red hills continually demonstrate the ideal growing conditions for Pinot Noir and produce wines that show pure fruit, bright acidity, intense depth, and a classic balance.

- Established in 2004.
- Consists of almost 7,000 acres, over 1,300 acres planted to wine grapes.
- This appellation is defined by a chain of hills created by a combination of volcanic activity and tectonic shifts.
- The region is well-known for its rich, red volcanic Jory soils, which were formed from ancient volcanic basalt and consist of silt, clay and loam.
- Average rainfall is 30-45 inches per year, most falling outside the growing season. The Coast Range provides protection from severe weather.

Dundee Hills – Bella Vida Vineyard



The Eola-Amity Hills AVA



The Eola-Amity Hills AVA



The Bieze Vineyard

Celebrated for diverse plantings, premium wine offerings, and adventurous and luxurious tasting rooms, the Eola-Amity Hills AVA offers everything Oregon wine country has to impart – from the rugged to the refined.

- Established in 2004.
- Majority of the region's vineyard sites sit at elevations between 250 to 700 feet.
- Like the Dundee Hills, this string of hills was created by intense volcanic and tectonic activity.
- Two of the predominant influences on the style of wines from this AVA are the shallow soils and the Van Duzer Corridor.
- **The Van Duzer Corridor** – a notch through the Coast range that allows cool ocean winds to flow in from the west, dropping overnight temperatures dramatically. This natural cooling system allows developing grapes to retain a bright acidity and firm structure.

Eola-Amity Hills – Bieze Vineyard

